

NEWS



Newsletter No. 6 - Sep. 2010

TimberlineCabins

great cabins great service happy customers *Guaranteed*

Another busy schedule before the end of the year.

I suppose by now we should expect it! 2010 seems to be shaping up for another busy end as we maximise our production schedule to get as many cabins up and ready for the end of year season. This year has also seen us gain a number of clients who we haven't previously worked for. We offer you a special welcome and look forward to a lasting relationship.

This issue of our quarterly newsletter looks at...

- New Colour Schemes for 2010/11
- Internal cabin layout and design

I hope you all have a good September holiday season, and I look forward to catching up with you soon.

Many thanks

Ben Scott

Manager - Sales and Design

New Colour SCHEMES



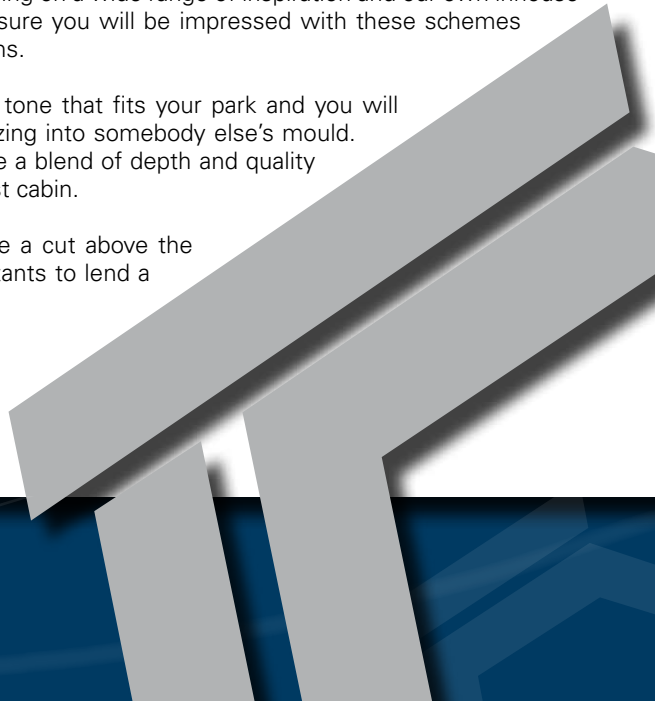
Mmm... Stunning. The only bad thing about our recently released colour schemes is that they are all so appealing that it is hard to choose between them!

To keep ahead of the ever evolving world of colour we have just released **six brand new interior colour schemes**. Drawing on a wide range of inspiration and our own inhouse Interior Design expertise, we are sure you will be impressed with these schemes when you purchase your next cabins.

These six schemes let you find a tone that fits your park and you will no longer feel as if you are squeezing into somebody else's mould. The modern array of colours create a blend of depth and quality beyond what you expect in a tourist cabin.

To make sure your next cabins are a cut above the rest ask one of our design consultants to lend a hand.

T: 1300 CABINS (1300 222 467)
www.timberlinecabins.com.au





Internal Layouts AND DESIGN

TimberlineCabins

great cabins great service happy customers *Guaranteed*

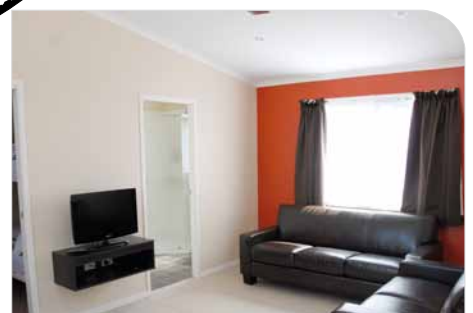
Getting the right internal layout isn't easy. Designing for the small area of tourist cabins is a lot more challenging than working with the large space of say a big residential home. There are many clever 'tricks' available when working with the smaller internal spaces of a tourist cabin. Physical layout, window sizes, colours and finishes all affect how spacious an interior appears.

Some primary considerations to consider when trying to maximise the space usage of your next cabins are:

- You never have a second chance to make a first impression. Try to ensure that the layout of the room into which you enter has good depth rather than being immediately confronted by a solid wall. Having a hallway (if your design needs one) that leads away from the entry door creates a perception of space.
- Position furniture to allow for **easy access at the front door**.
- Choose a roofline that allows you to have **high ceilings**. The use of a skillion roof (single pitch from left to right) means that you can have a tall raked ceiling which creates an enormous sense of space.
- Don't be afraid to use a **bold colour** as a feature wall. Contrary to popular belief they don't make a room look smaller.
- Include as much **window space** as possible.
- Keep clutter to a minimum. Don't over populate your interior. One larger wall hanging is more effective than three smaller ones. Also choose the most compact and functional furniture you can.

As always - we love to share the knowledge we have gained in interior design to help you designing your next cabins. **What we have consistently found is that you can achieve an outstanding result in a cleverly designed smaller cabin rather than stepping up to a larger and more expensive floor plan.**

Don't be put off if you only have a compact site to work with. Let our experienced professionals assist you in creating functional cabins that have your clients coming back year in and year out!



DESIGN TIP

RAKED CEILING WITH HIGHLIGHT WINDOWS

This is by far the most effective way to create a dynamic sense of space. The modern exterior line of a skillion roof not only looks good on the outside but allows for a high ceiling and the addition of highlight windows. It is amazing how this changes the interior of a cabin.

Ask us about suitable designs for this option.

In the next edition we will be looking at...

- Environmentally sustainable choices for your next cabins.

Got a topic or question? Email ben@timberlinecabins.com.au

T: 1300 CABINS (1300 222 467)
www.timberlinecabins.com.au